

E34 - Standalone Statements: Designing the Next Generation of Freestanding Emergency Departments

Tim Spence, AIA, FACHA

Carolyn Knaup, MHA, RN

Maureen Leckie, MSN, RN

TODAY'S
SPEAKERS



Carolyn Knaup
Senior Vice President

Strategic Ventures
& Ambulatory Operations
WakeMed Health
& Hospitals



Maureen Leckie
Associate Vice President

Ambulatory Operations
Lakeland Regional Health



Tim Spence
CEO

Principal in Charge
BSA LifeStructures

LEARNING OBJECTIVES

Discuss the pressing need for FSEDs in contemporary healthcare landscapes, shedding light on their pivotal role in augmenting emergency care accessibility.

Gain insight into how these decentralized emergency facilities redefine healthcare infrastructure and community access to health, contributing to a more responsive, safe, and resilient healthcare system.

Understand the technical and planning intricacies and strategic considerations influencing the design and construction of FSEDs.

Learn about the operational aspects that reframe the unique challenges and opportunities posed by FSEDs in comparison to traditional hospital emergency departments.



CASE STUDY

WENDELL FALLS FSED
WAKEMED



WENDELL FALLS FSED WAKEMED

SCALE:
24,178 SF

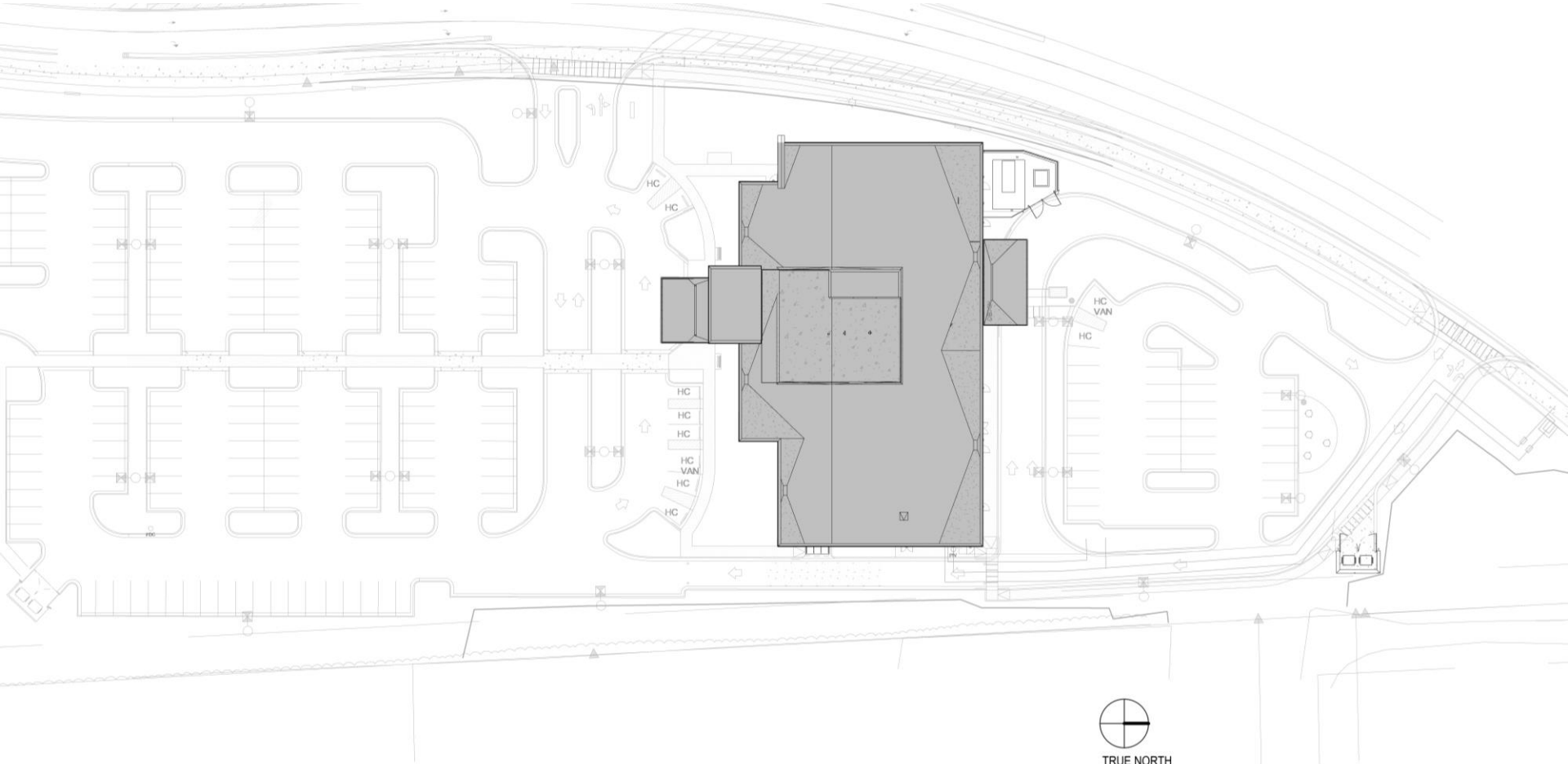
SCOPE:
12 Treatment Rooms
(Including 1 Trauma),
4 Triage, Lab, 2 Xray,
1 CT, 1 Ultrasound,
Mobile MRI

TIMELINE:
Construction
01/2023 - 11/2023

**CONSTRUCTION
COST:**
\$19.2M



WENDELL FALLS FSED | **WAKEMED**



WENDELL FALLS FSED | **WAKEMED**





WENDELL FALLS FSED | WAKEMED



LRH FSED LAKELAND HEALTH

SCALE:

44,000 SF on a
3.43 acre site

SCOPE:

13-Standard treatment
rooms, 1-dual treatment
room (POS), 1-dual trauma
room, X-Ray, CT, Lab,
2-Triage rooms

TIMELINE:

Estimated completion
January 25, 2025

CONSTRUCTION

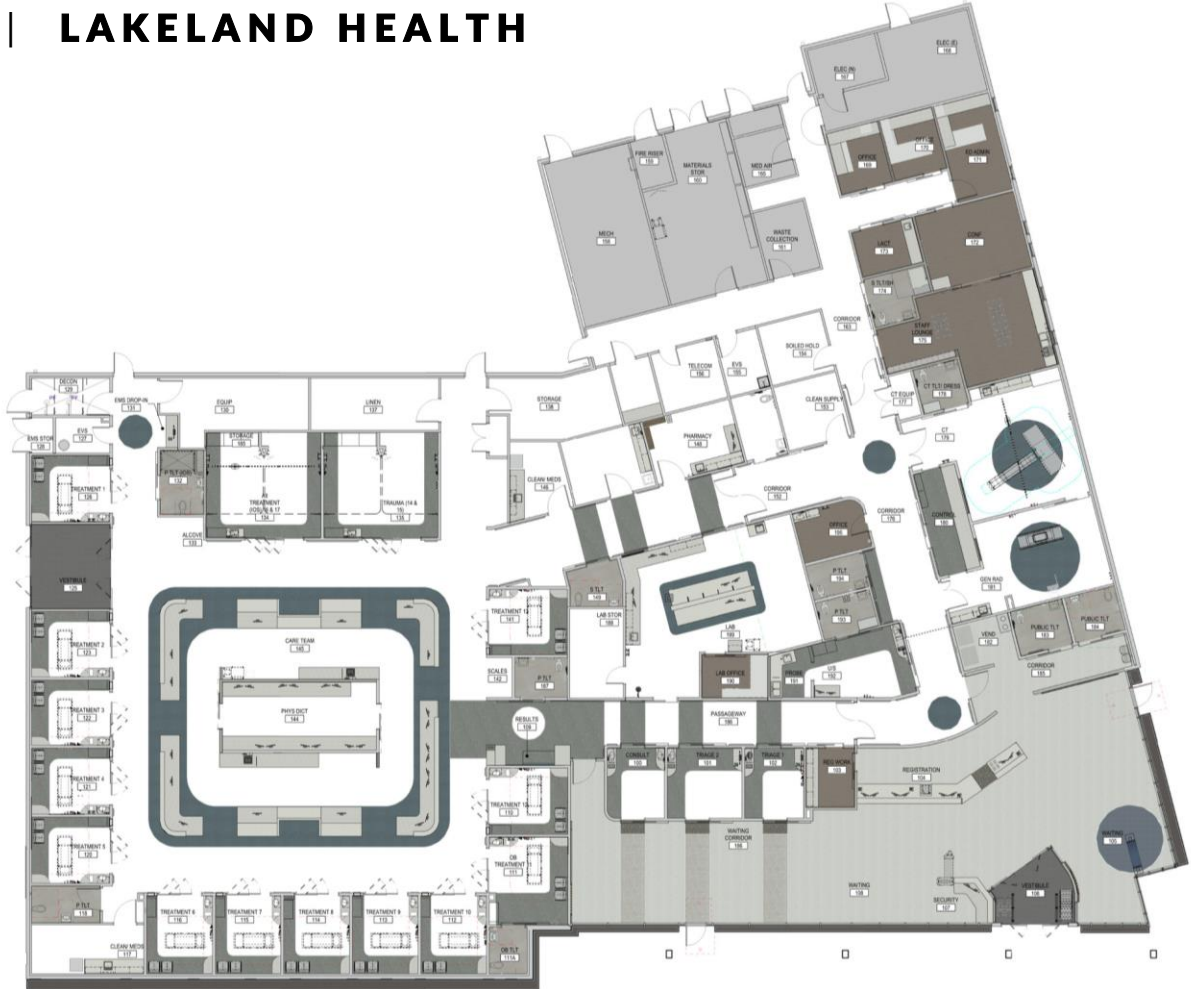
COST:

\$17.75M





LRH FSED | LAKELAND HEALTH







The Imperative for FSEDs

QUESTION 1:

FSEDs are growing across the nation.
What are the key factors driving the
growth of FSEDs?



FSED | NATIONAL GROWTH

PATIENT APPEAL

SCORE: 7/16

BUSINESS OPPORTUNITIES

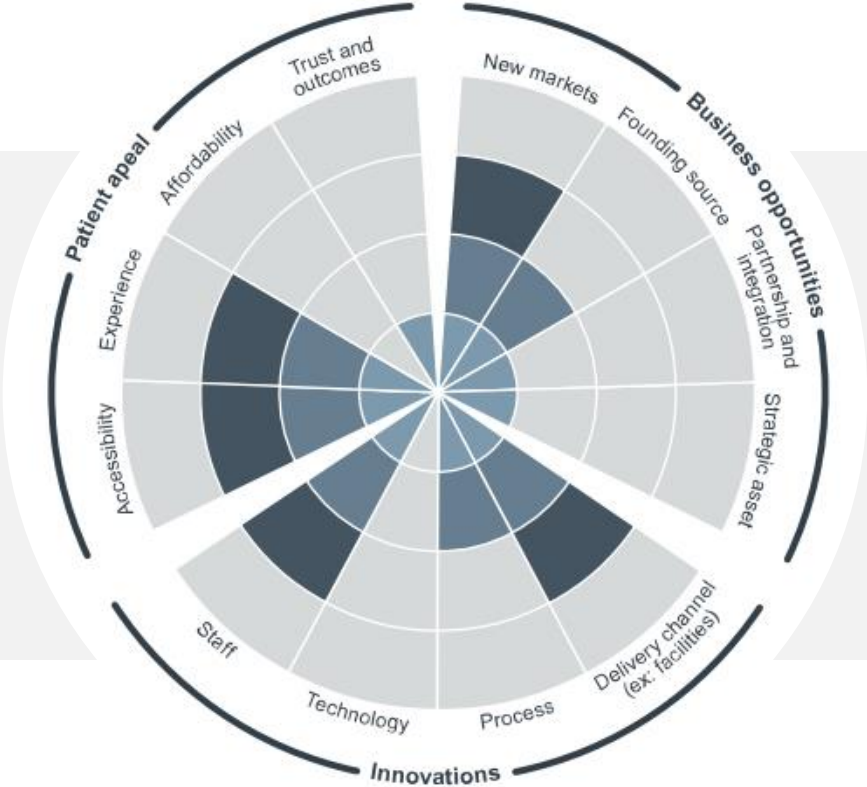
SCORE: 7/16

INNOVATIONS

SCORE: 8/16

DISRUPTOR ASSESSMENT SCORE

- 1
- 2
- 3
- 4



315

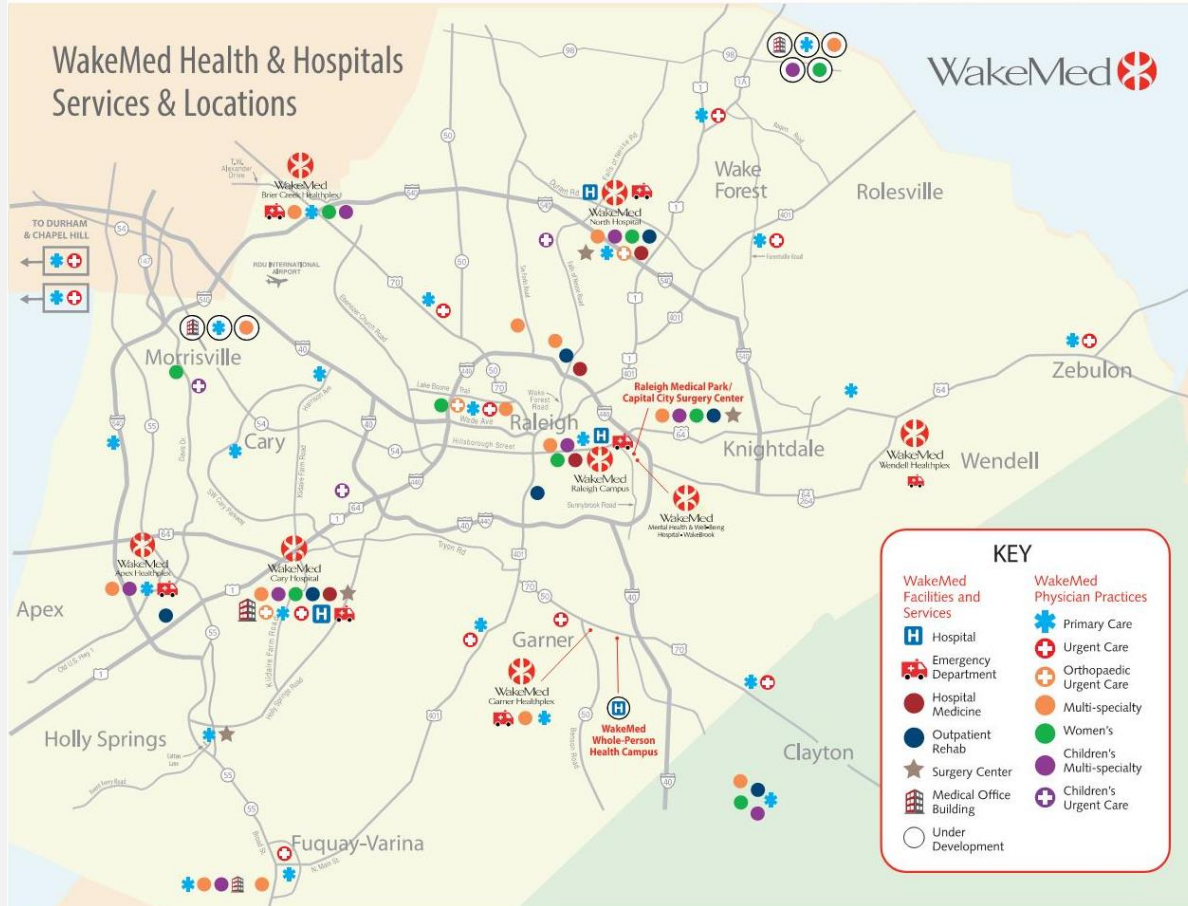
NEWLY CERTIFIED FACILITIES

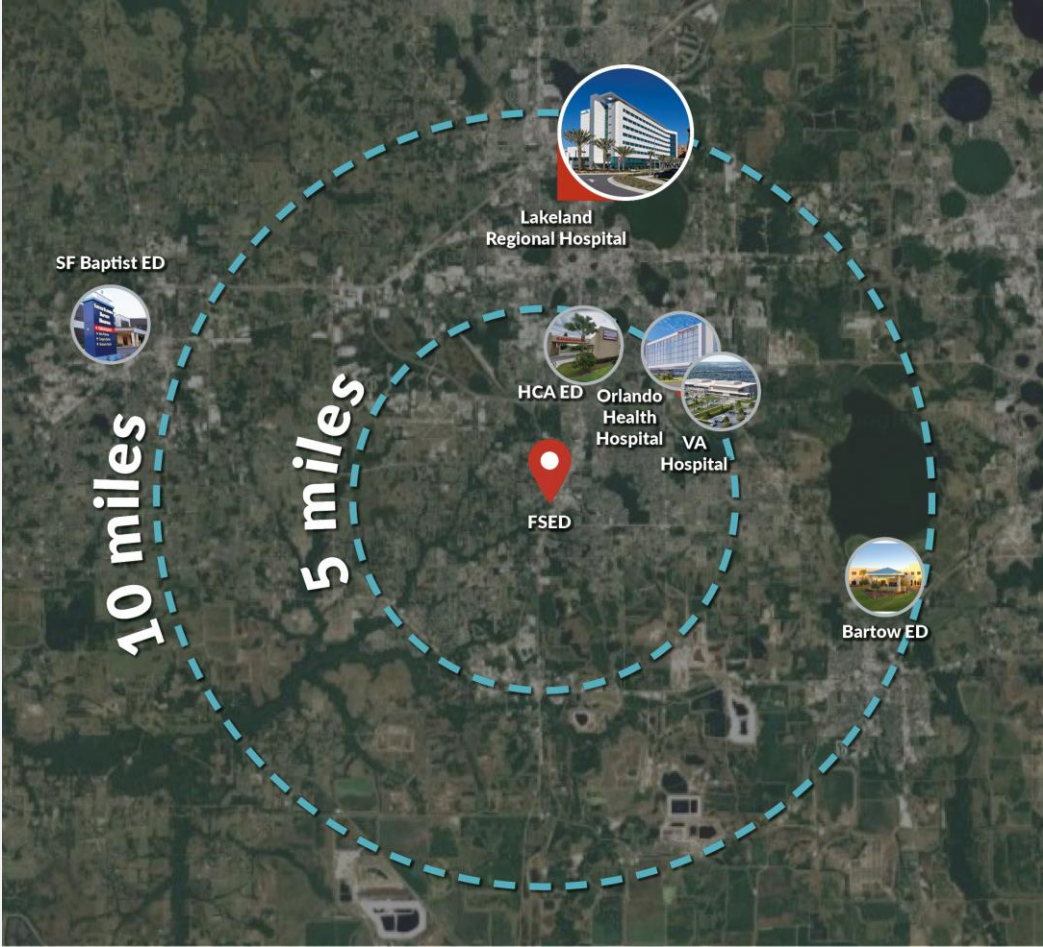
With fewer than 10 beds since March 1, 2020

83%

FACILITIES CERTIFIED

Since March 1, 2020 which have only 1 bed





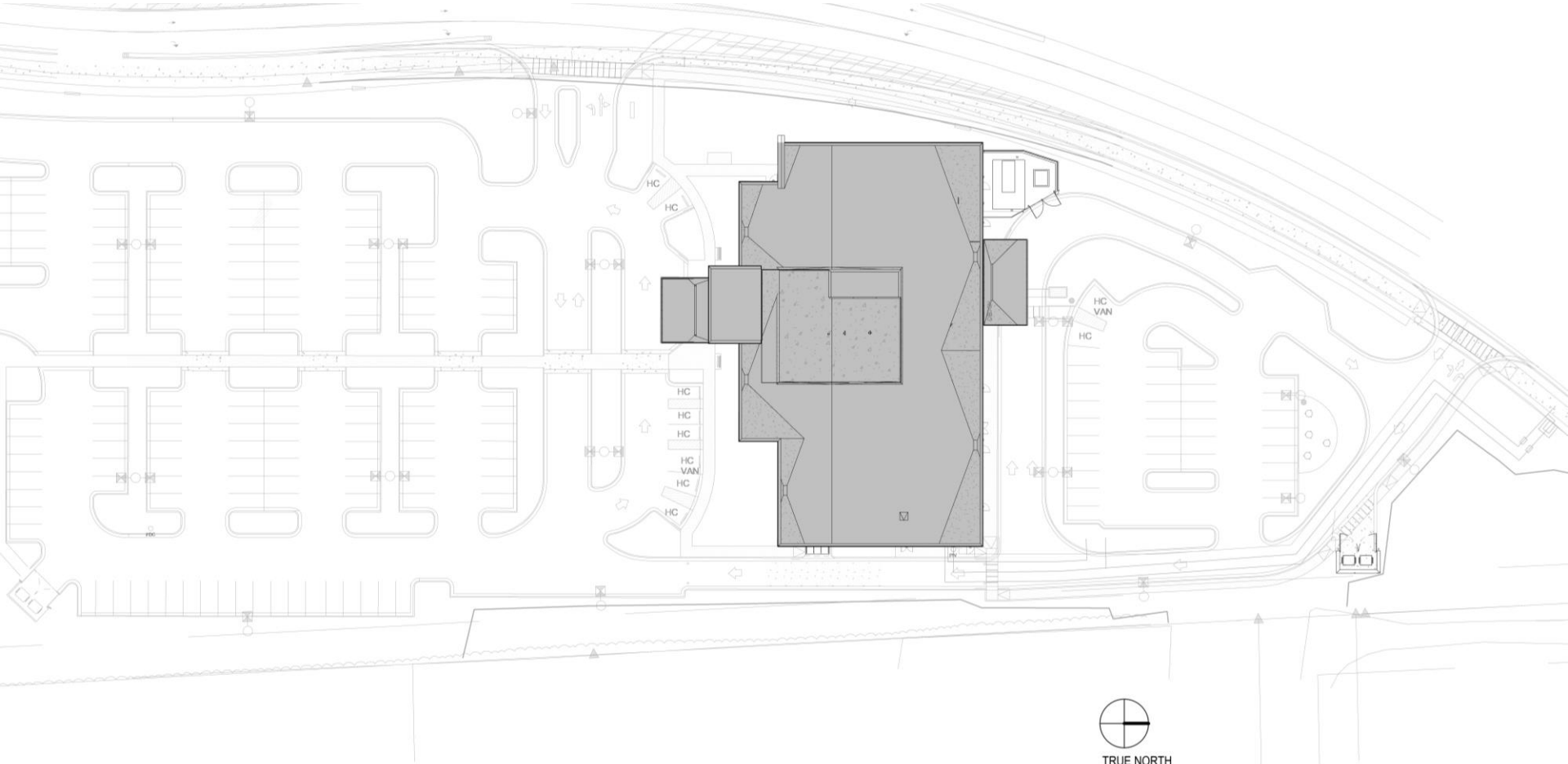
FSEDs and Ambulatory Real Estate Strategy

QUESTION 2:

When you look at your real estate portfolio, what is the strategic role that your FSED plays?



WENDELL FALLS FSED | **WAKEMED**





Operational Intricacies

QUESTION 3:

What makes these facilities work from an operator's perspective and what are some of the critical requirements for FSEDs?



WENDELL FALLS FSED | **WAKEMED**



LRH FSED | LAKELAND HEALTH



Design & Planning Considerations

QUESTION 4:

From a planning perspective, what are the essential design elements for optimal patient flow and care delivery?



WENDELL FALLS FSED | WAKEMED





The Human Experience in FSEDs

QUESTION 5:

These facilities need to be cost conscious. So, help the design community understand what are the important elements for creating a positive human experience in FSEDs?





We really believe that healthcare is local, so being in Wendell has been such a benefit, not only for the patients and their families but for us as the healthcare provider.

Carolyn Knaup

SENIOR VICE PRESIDENT, WAKEMED





Lessons Learned

QUESTION 6:

What critical lessons have you learned through this process that we as design professionals need to understand?



LESSONS LEARNED

SINGLE FSED

- Identify processes for transport of patients to a medical center for those in need of a higher level of care than can be provided at the FSED or admission.
 - Collaborate with the medical center emergency department and clinical areas to develop protocols for transport directly to service needed such as cath-lab, interventional radiology, OBED, behavioral health (if avail), and admission.
 - Provide a pediatric “boot camp” if adult MDs who have not regularly treated pediatric patients will be the provider for both adult and pediatric patients.
 - Help guide and educate the clinical team to understand that the staffing ratio and mix should look different from a traditional Emergency Department.
-



LESSONS LEARNED

MULTIPLE FSED

- Do your research and fully understand the regulations for your State. These facilities are truly equivalent to a community hospital ED so you have to be prepared to accept everything. Site visits are really important to glean ideas from others.
 - Experienced staff are absolutely necessary to open. These locations are excellent training sites but not ideal for new graduates unless you have the ability to pair them for an extended period of time.
 - Cross train where applicable. (WakeMed example of RT's and CT techs)
 - Involvement with your selected architect and builder from conception reduces/minimizes changes. Need to develop that sense of bidirectional trust and understanding of culture.
 - INSIST on mockups of the exam rooms to get all staff input.
 - Develop a plan to market to the community, EMS, physicians etc. Many people still believe these are glorified Urgent Care centers.
 - Assemble workgroups early in the process that bring all the necessary departments together, especially if this is your first location.
 - Don't be afraid to approach this location with some creativity; doesn't have to fit the hospital mold of an ED.
-



Thank You

POINT OF CONTACT:

Tim Spence

CEO

Principal In Charge

314.330.6280

tspence@bsalifestructures.com

BSA

Rate this Conference Session in the HCD CONNECT APP

To provide your feedback, simply open the mobile or desktop HCD Connect app, locate this session in the agenda, and complete the survey.

Your insights are crucial for us to understand your experience and identify areas for improvement, ensuring we deliver the best content and experience possible.



Download the app

Join the conversation with #HCDcon



Follow us!